

# 'Founding Mothers' of Medical Librarianship



Marcia Noyes



Mary Louise Marshall



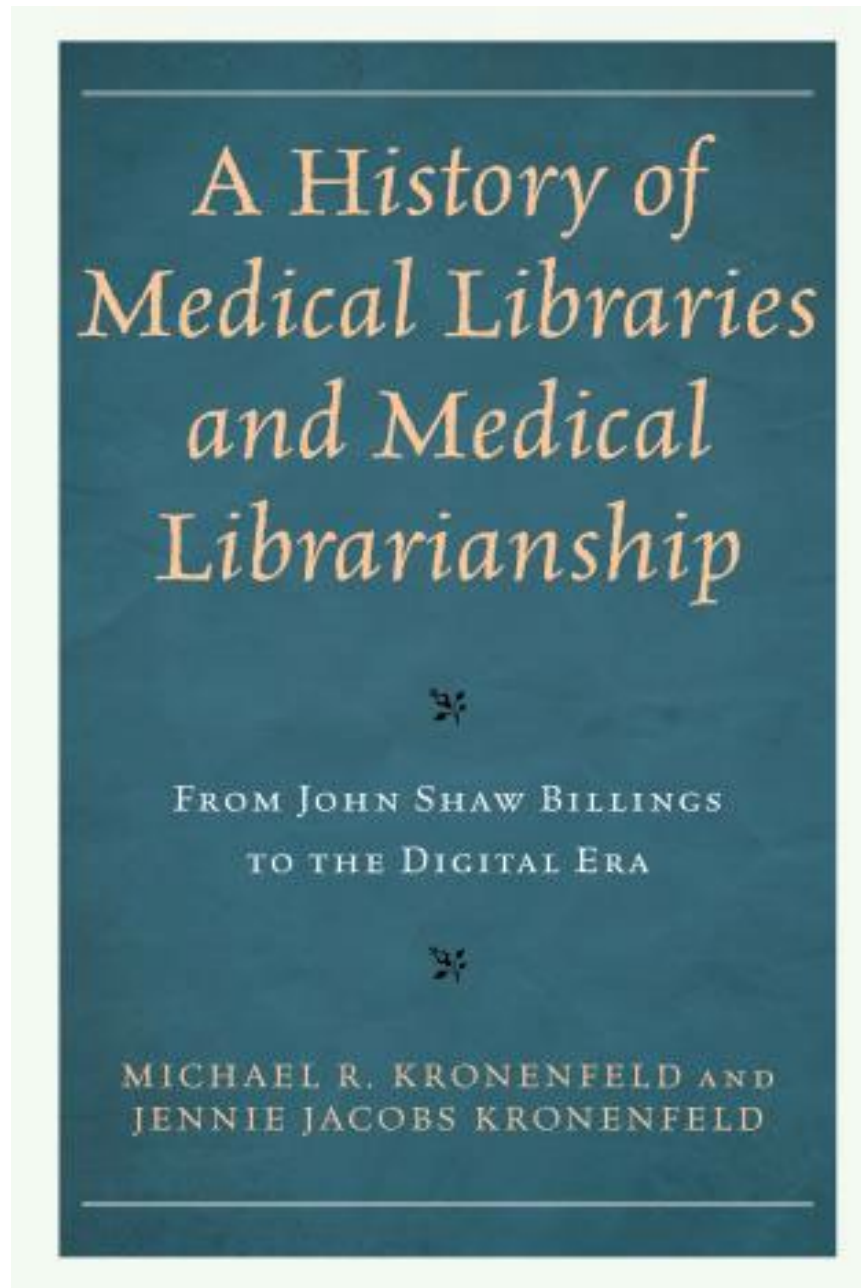
Janet Doe



Eileen Cunningham



Estelle Brodman



# MEDLARS Computers and NNLM Regions



## National Network of Libraries of Medicine (NNLM)

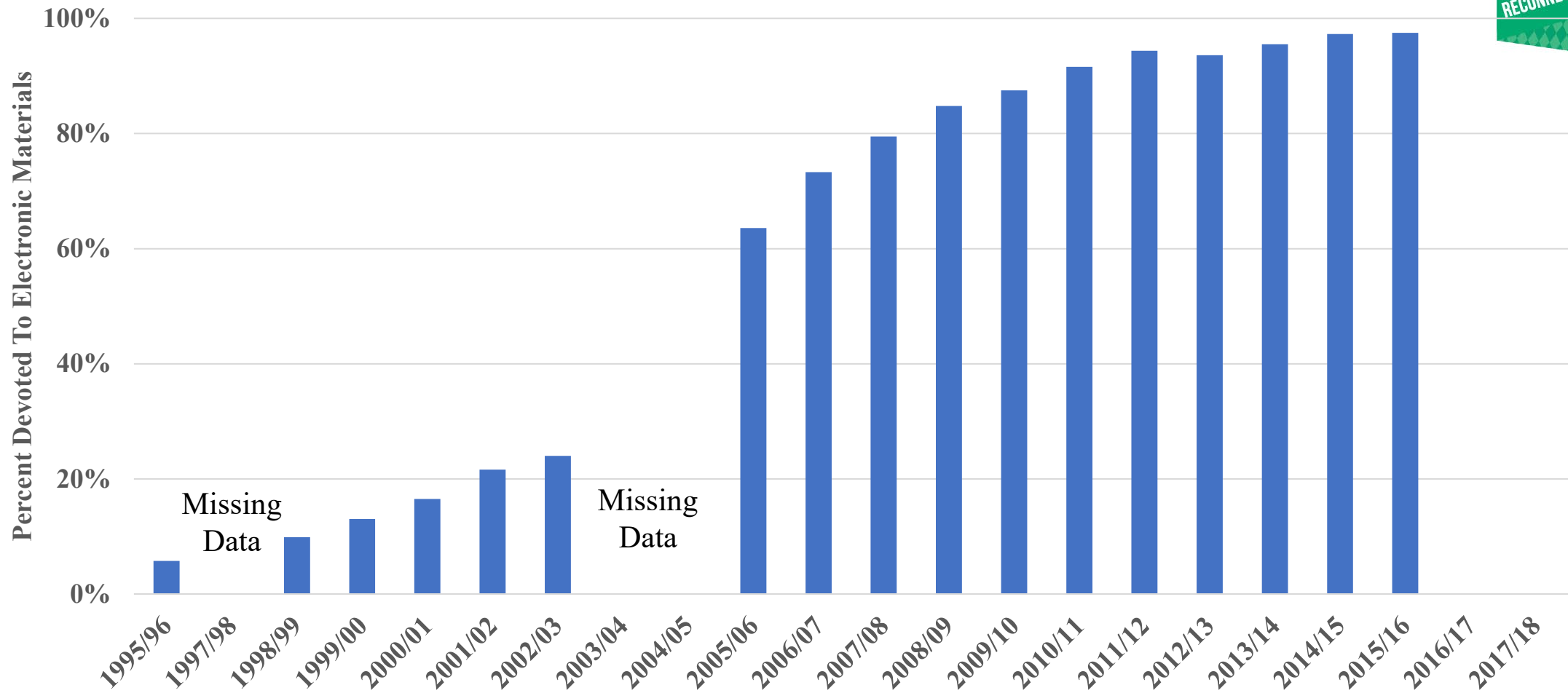
[nnlm.gov/members/join-network](https://nnlm.gov/members/join-network)

### Regional Medical Libraries

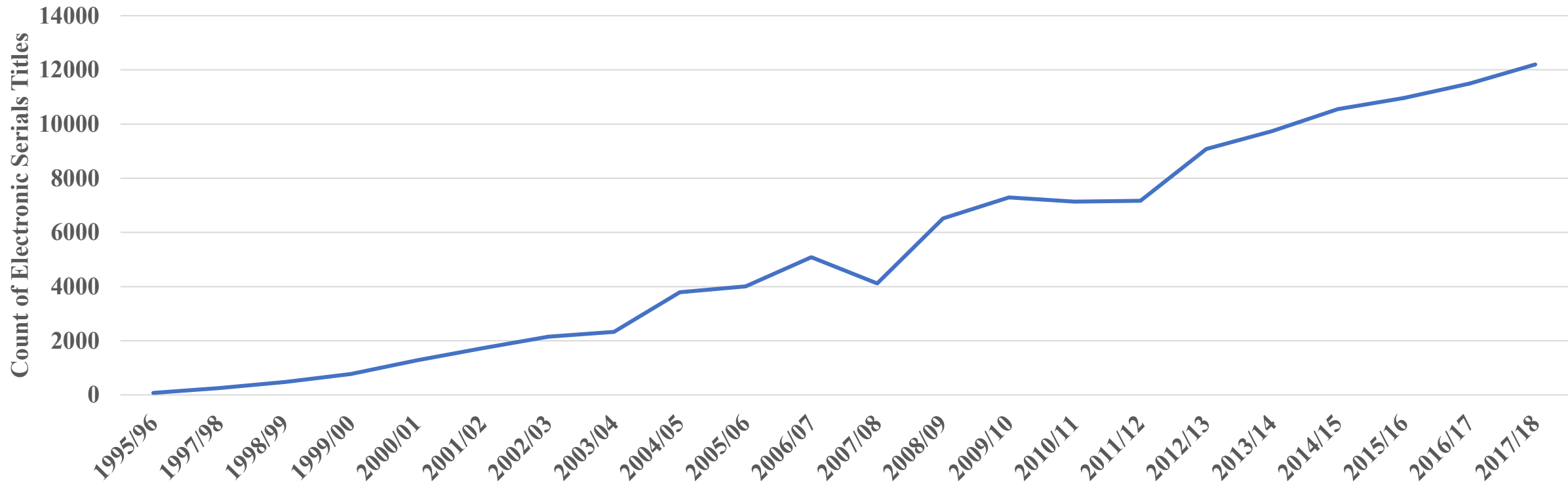
|    |                                    |       |
|----|------------------------------------|-------|
| 1. | Middle Atlantic Region (MAR)       | Pitt  |
| 2. | Southeastern/Atlantic Region (SEA) | UMB   |
| 3. | Greater Midwest Region (GMR)       | UI    |
| 4. | MidContinental Region (MCR)        | Utah  |
| 5. | South Central Region (SCR)         | UNT   |
| 6. | Pacific Northwest Region (PNR)     | UW    |
| 7. | Pacific Southwest Region (PSR)     | UCLA  |
| 8. | New England Region (NER)           | UMass |



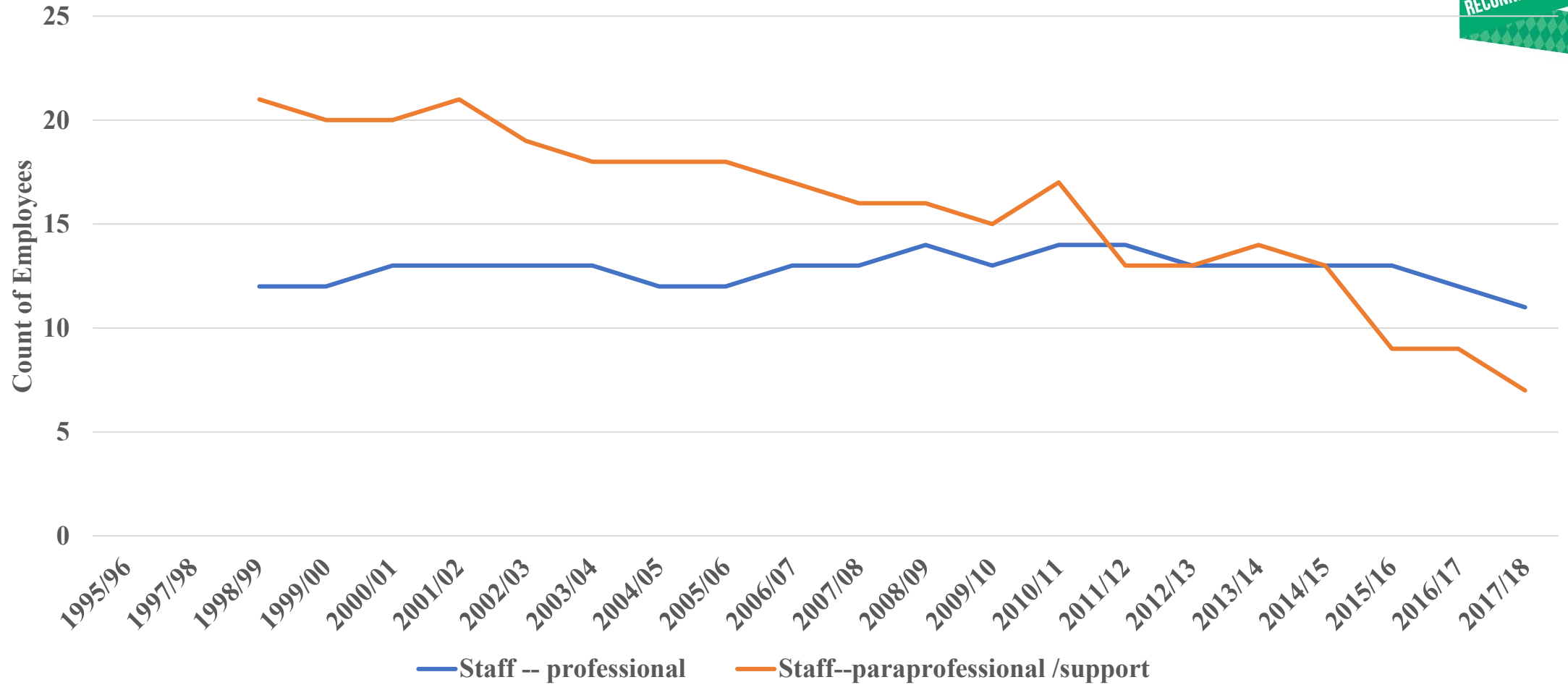
# Transition Data - Print to Digital – Percent of Collection Budget Devoted To Electronic Materials



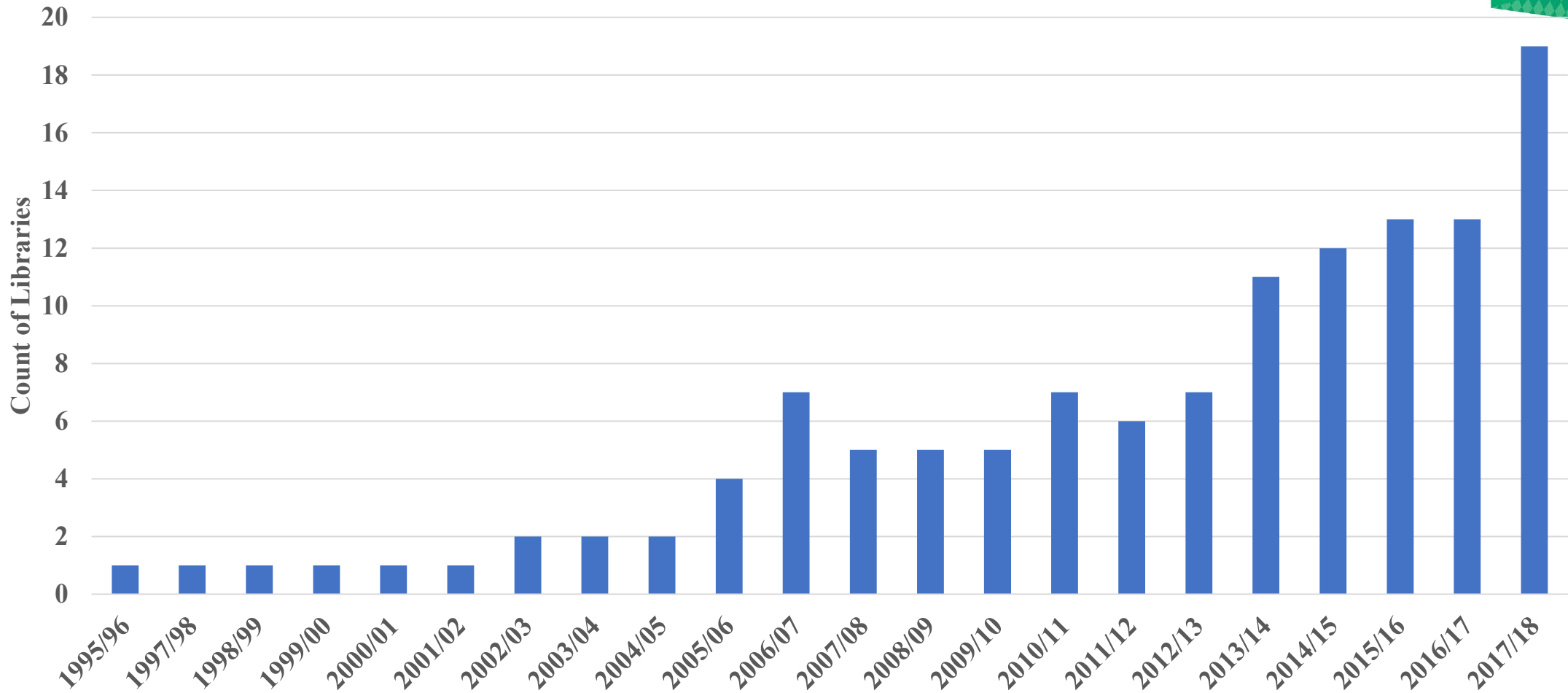
# Count of Electronic Serials Titles

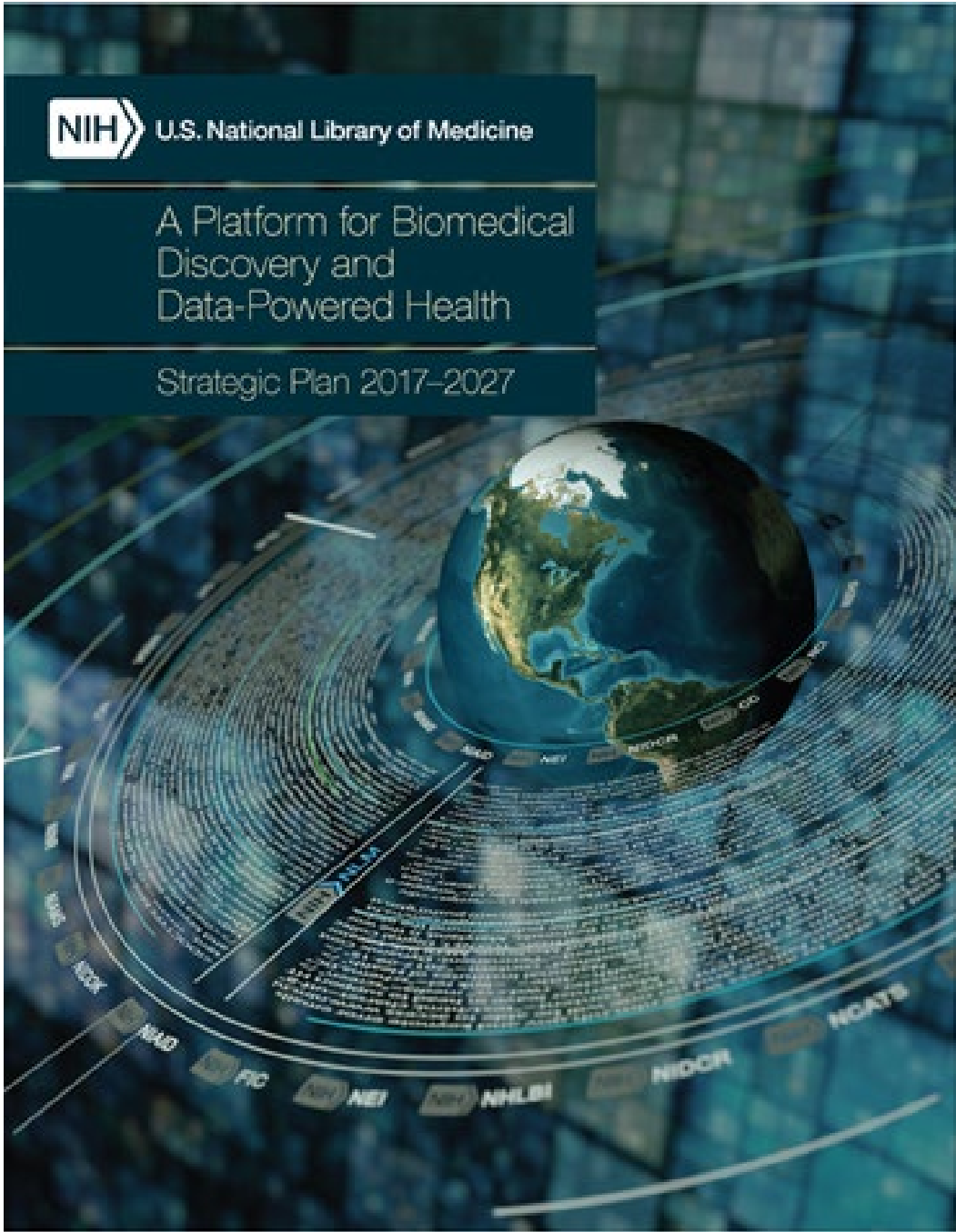


# Transition Data Print to Digital – Staff and Professional Employees



# Transition - Data Print to Digital – Total Number of Libraries with Fewer than 15,000 Print Volumes







# NLM 2017-2017 Strategic Plan Goals



## GOAL 1

**Accelerate discovery and advance health through data-driven research**

- 1. Connect the resources of a digital research enterprise**
- 2. Advance Research and development in biomedical informatics and data science**
- 3. Foster open science policies and practices**
4. Create a sustainable institutional, physical, and computational infrastructure

## GOAL 2

**Reach more people in more ways through enhanced dissemination and engagement**

- 2.1 Know NLM users and engage with persistence
- 2.2 Foster distinctiveness of NLM as a reliable, trustable-source of health information and biomedical data
- 2.3 Support research in biomedical and health information access methods and information dissemination strategies**
- 2.4 Enhance information delivery

## GOAL 3

**Build a workforce for data-driven research and health**

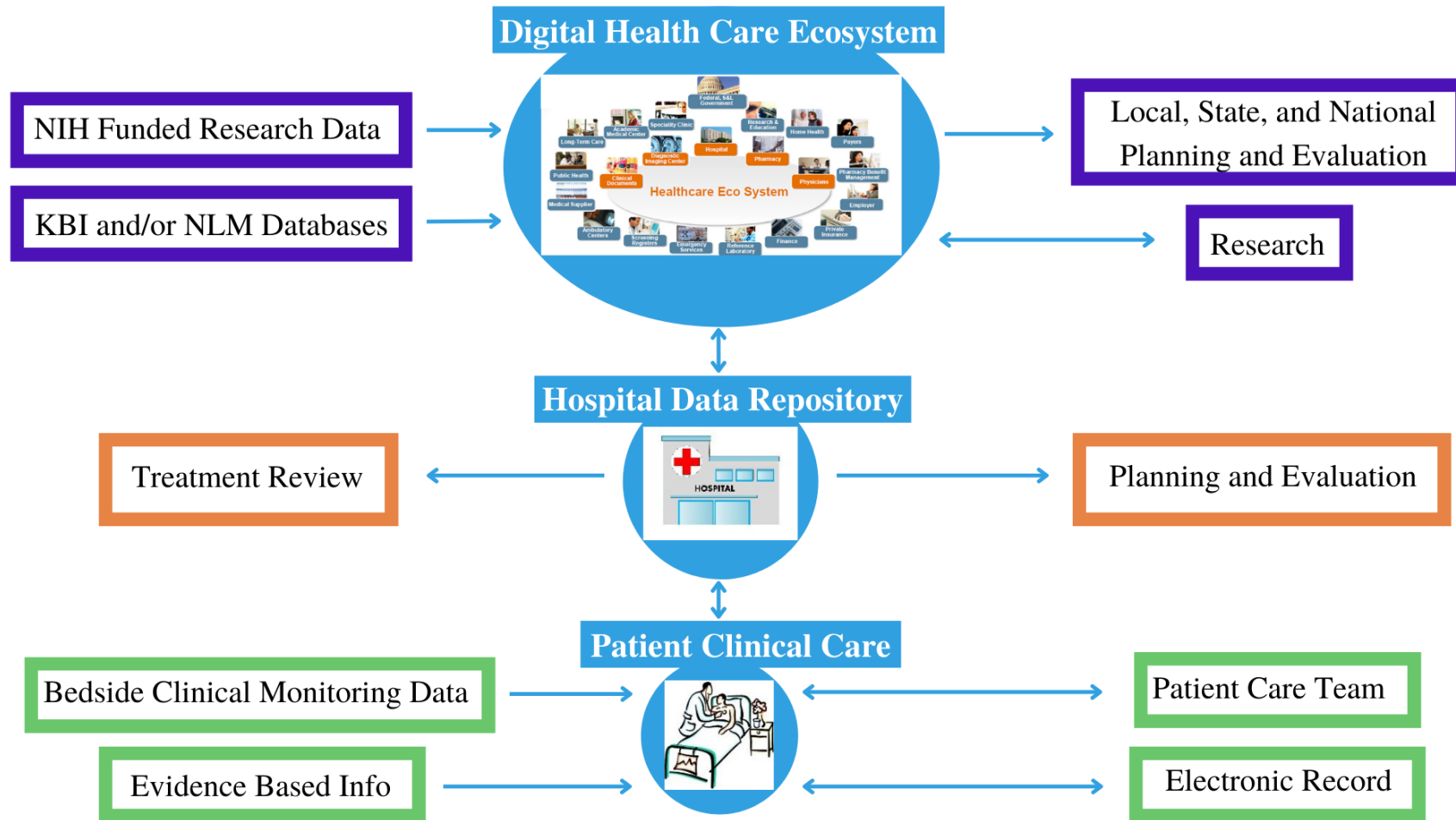
- 3.1 Expand and enhance research training for biomedical informatics and data science**
- 3.2 Assure data science and open science proficiency
- 3.3 Increase workforce diversity
- 3.4 Engage the next generation and promote literacy

## Emerging concepts and innovations in the emerging era of computable biomedical knowledge (CBK):

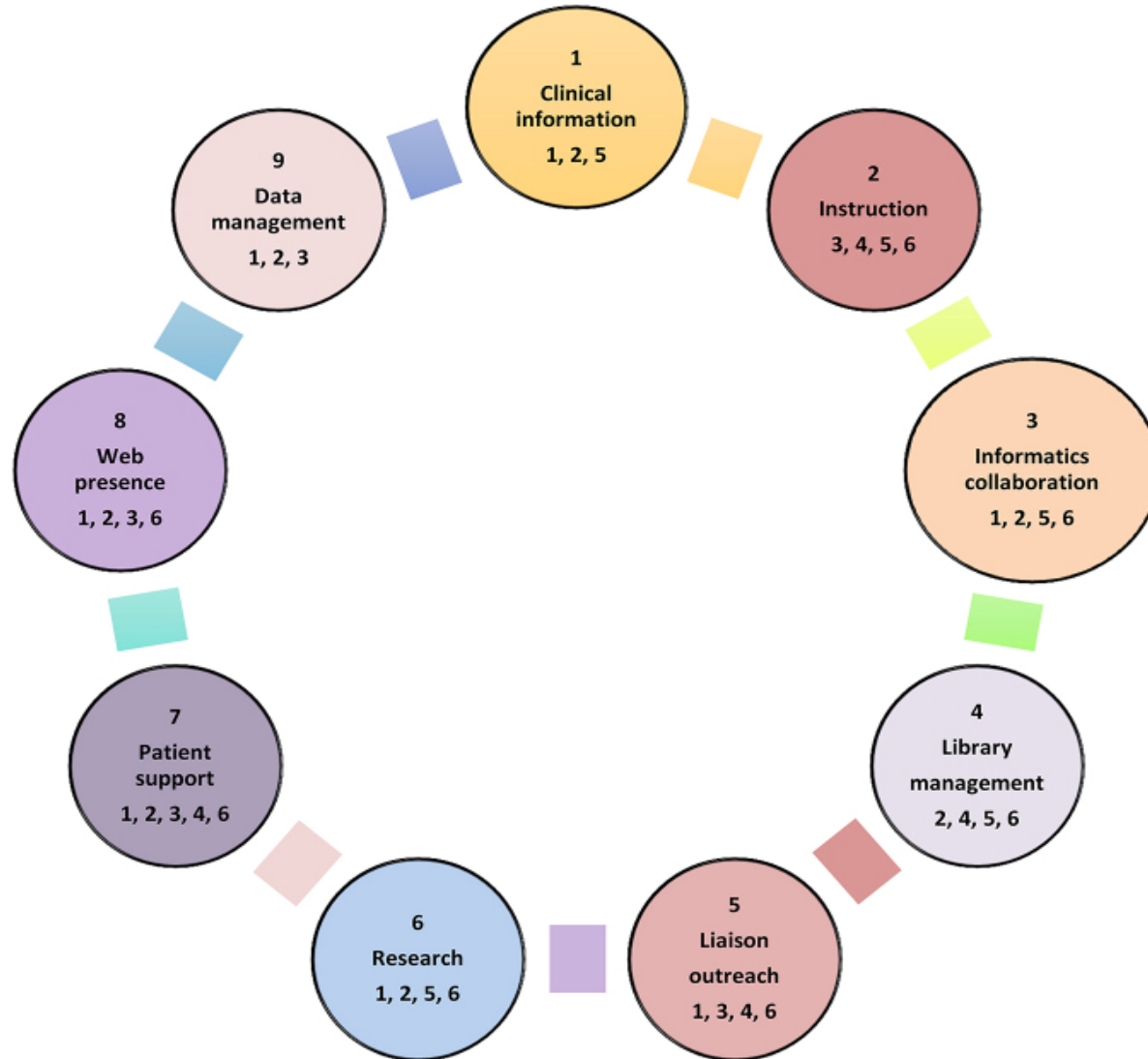


- **Computable Biomedical Knowledge (CBK)**
- **Common Data Elements (CDEs)**
- **Resources for Data Driven Discovery (RD3) Portal**
- **FAIR Guiding Principles for scientific data management and stewardship**
- **COAR – Confederation of Open Access Repositories**
- **Learning Health Systems**

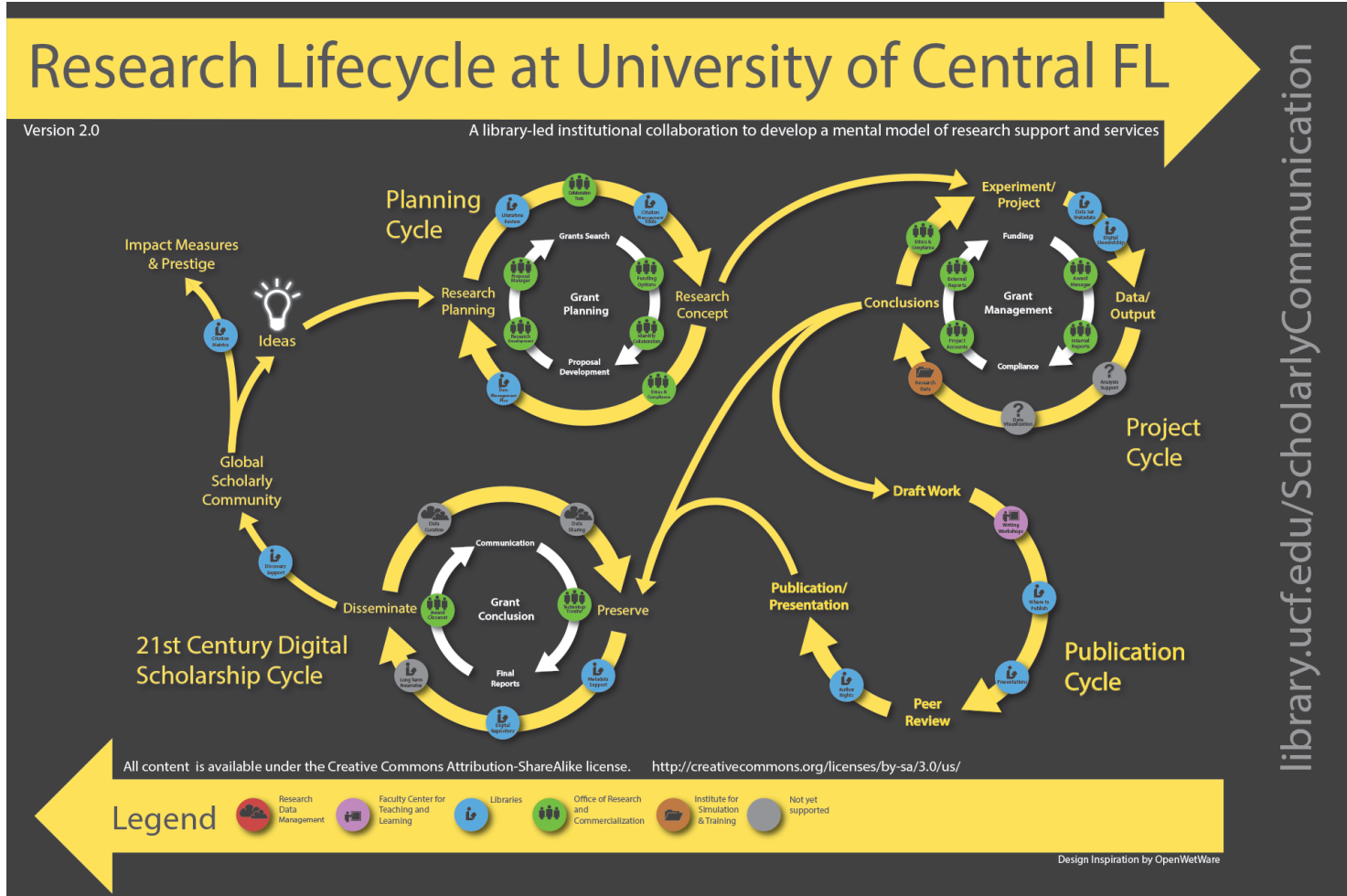
# Learning Health System in Support of a Hospital Patient's Clinical Care and Monitoring



Ma, Jinxuan et al. “Emerging roles of health information professionals for library and information science curriculum development: a scoping review.” *Journal of the Medical Library Association: JMLA* 106, 4 (2018): 432-444.



# University of Central Florida Research Lifecycle of Research Support and Services



# MLA Data Services Specialization



**Earning the MLA Data Services Specialization (DSS) indicates that you have received training in providing data services to researchers, clinicians, students, librarians, and others who work with data--and recognition for the accomplishment of acquiring skills in providing data services. MLA offers a Level I DSS certificate. A Level II DSS certificate is planned for 2022.**